

*"We Make Your Safe **PERFECT**"*



SINCE 1938



# The Story of PERFECT

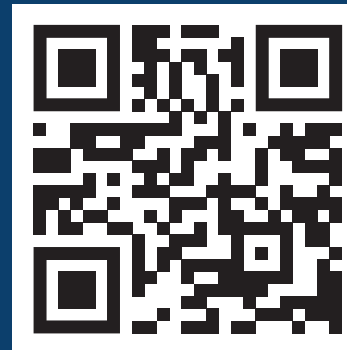
**PERFECT** born out of a gradual metamorphosis from M/s. Luhar Jadyji Raghavji established by shri Bhimjibhai Jadvjibhai Luhar in 1938. this long journey of excellence has made PERFECT synonymous with quality and trust PERFECT is an entity that stands for durability, Reliability and Affordability. It offers a complete product range of security Equipments. Fire and burglar Resisting safe, Strong Room doors, safe Deposit locker, Cabinets, Safe cum safe Deposits lockers, Cash box, Coffers and special quality heavy steel cupboards.

Ever since its inception PERFECT has chosen to walk the path of precision and innovation. The company is constantly alive to the technological evolutions of the industry and thus it has always been a forerunner in adopting the latest and innovative technologies. Each unit at PERFECT is designed to offer your value for money by its team to technical experts having experience of more than three decades in the field.

Over the years the company has developed its own simple but efficacious methodologies of customer services. It understands the specific needs and requirements of the customers and offers complete support at all times.

## Why to Choose Perfect Safe?

- ✓ Indigenous Product with Latest Technology.
- ✓ Quality Safe Manufacturer Since 1938.
- ✓ Minimum Time Delivery.
- ✓ PAN India Presence.
- ✓ LifeTime Warranty.



Strong storage at an affordable price...



26"H x 21"W x 21"D  
350KG



28.5"H x 22"W x 21"D  
400KG



36"H x 24"W x 21"D  
520KG



42"H x 27"W x 24"D  
670KG

- Specially designed to safeguard your everyday valuables, the Safe King is a highly economic choice.
- Safe king focuses on optimizing the build quality by providing the major safety features in the core areas.

## Application :

Safe Kings are suitable for Homes, Offices, Petrol pumps, etc.

## Technical details :

- ★ **Body :**  
Manufactured from tough steel plates.
- ★ **Overall body thickness :**  
100mm including fire and burglary resisting barrier material.
- ★ **Door :**  
Provides protection against fire and burglary by barrier materials.
- ★ **Total Thickness :** 58mm | **Overall thickness :** 140mm
- ★ **Locks :**  
Mechanical heavy duty dual control locks.

# “The King of Safety”



48"H x 30"W x 24"D  
820KG

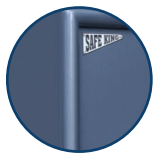


60"H x 30"W x 30"D  
1250KG



72"H x 30"W x 30"D  
1450KG

## Features :



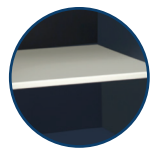
Double body construction.



Stainless steel accessories



Fire/Burglary resistant



Removable shelves.

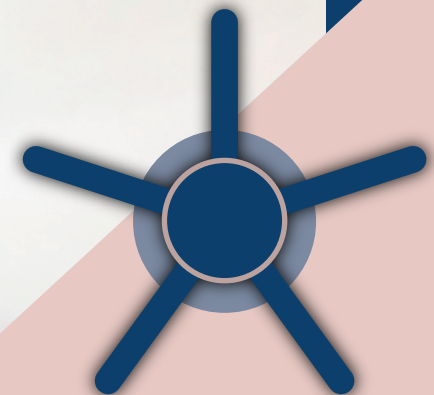


Premium coated coarse finish



Comes with re-locking system  
(which dead locks the safe in case of  
disengaging attacks on locks)

Take a sigh of relief,  
when **SAFE KING** is in...





SINCE 1938

**PERFECT STEEL WORKS**

Shed No. C1 / 278, R-Road,  
G.I.D.C. AJI 2, RAJKOT - 360 002.

PH. : (O) 0281-2387937

MO. : 94272 39267 | 9426784902

 [www.perfectsafe.in](http://www.perfectsafe.in)

|  [info@perfectsafe.in](mailto:info@perfectsafe.in)



**IS : 550 (PART-1)**



**CM/L:7600194016**

